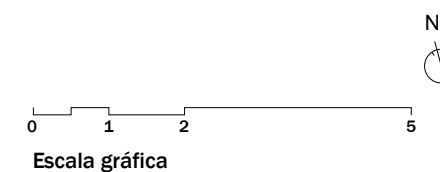
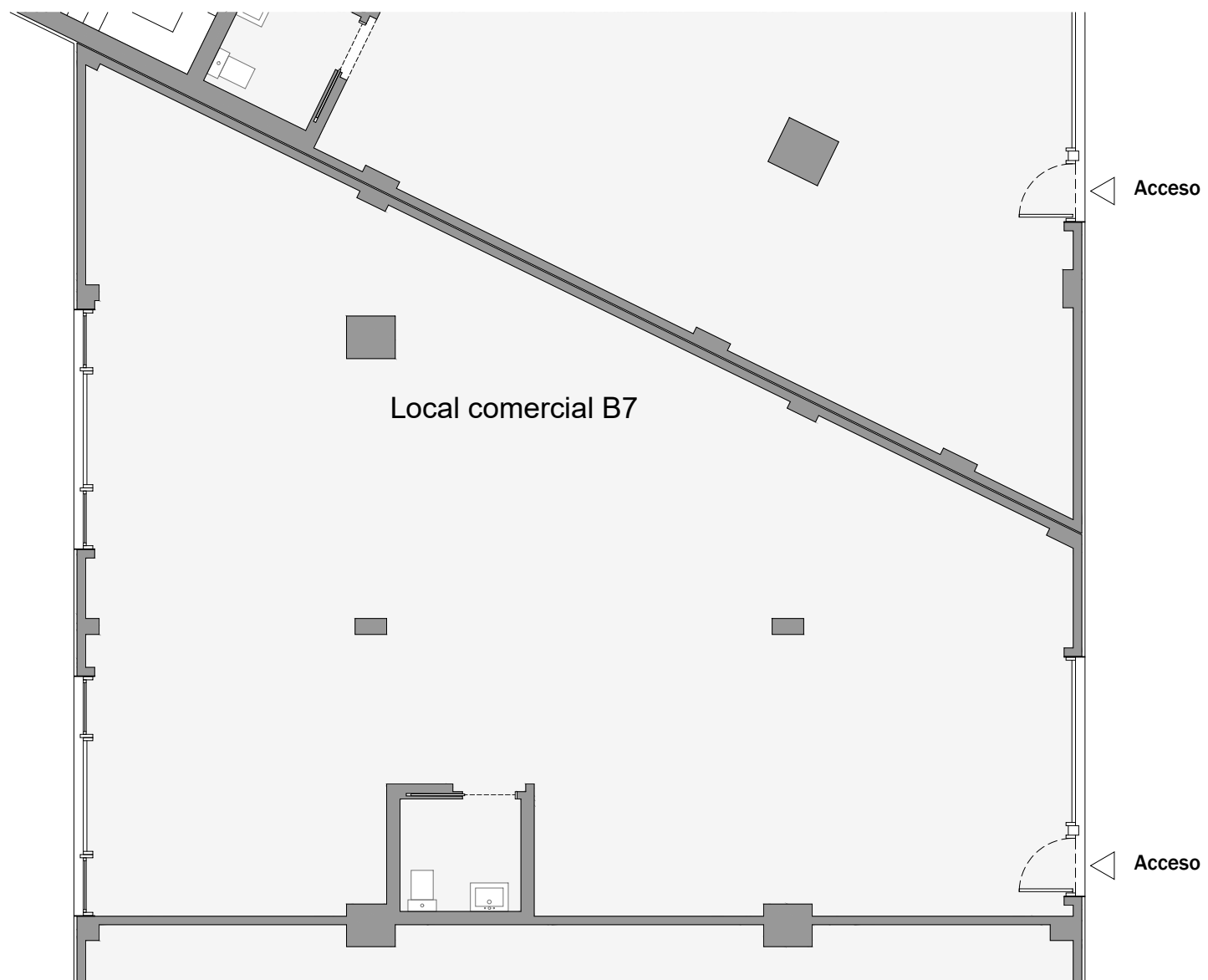


TALASSA BADALONA - LOCAL COMERCIAL B7

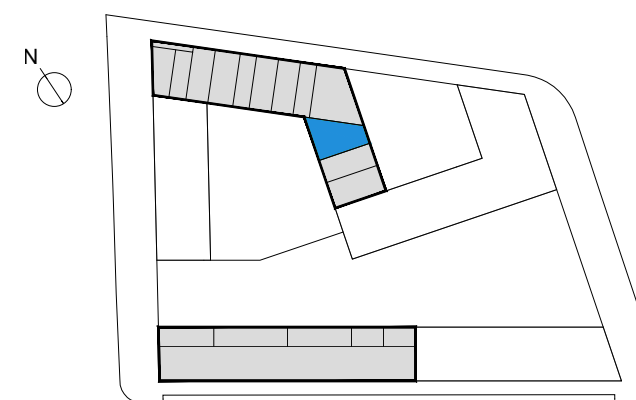
C/ DE LA MAR JÒNICA, C/ D'EDUARD MARISTANY, C/ DEL MARE NOSTRUM, BADALONA, BARCELONA

CULMIA



Superficies

Útil interior aproximada	148.16 m2
Construida	160.01 m2



Talassa
Badalona