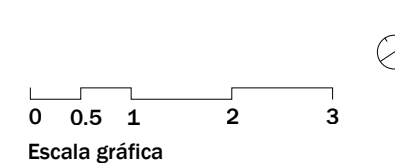
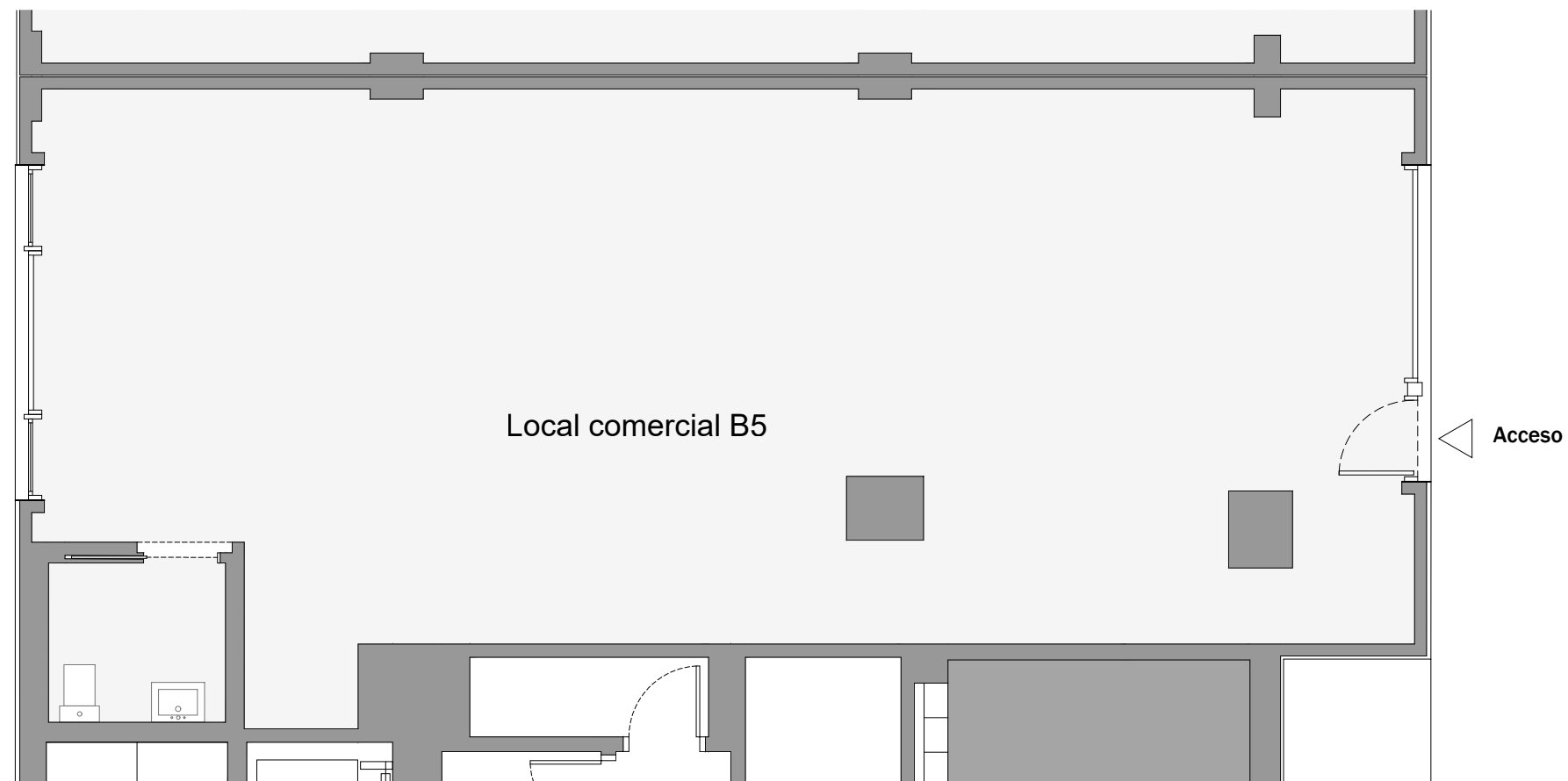


TALASSA BADALONA - LOCAL COMERCIAL B5

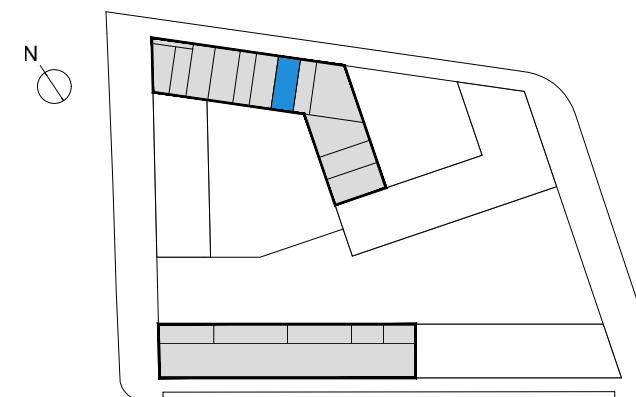
C/ DE LA MAR JÒNICA, C/ D'EDUARD MARISTANY, C/ DEL MARE NOSTRUM, BADALONA, BARCELONA

CULMIA



Superficies

Útil interior aproximada	97.47 m ²
Construida	107.77 m ²



Talassa Badalona