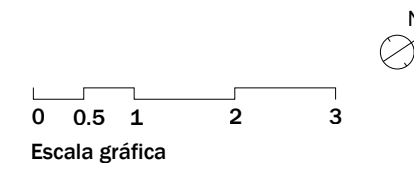


TALASSA BADALONA - LOCAL COMERCIAL B3

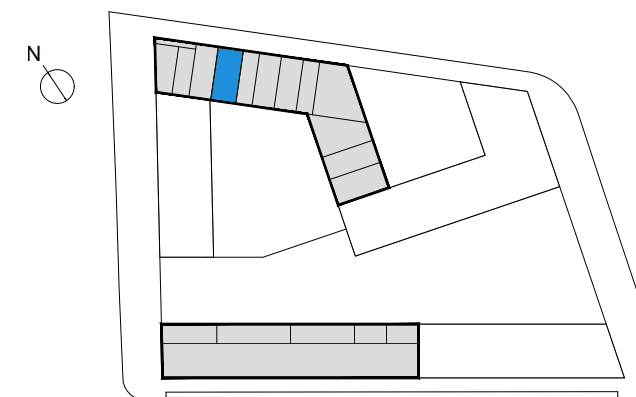
C/ DE LA MAR JÒNICA, C/ D'EDUARD MARISTANY, C/ DEL MARE NOSTRUM, BADALONA, BARCELONA

CULMIA



Superficies

Útil interior aproximada	107.69 m ²
Construida	118.54 m ²



Talassa Badalona