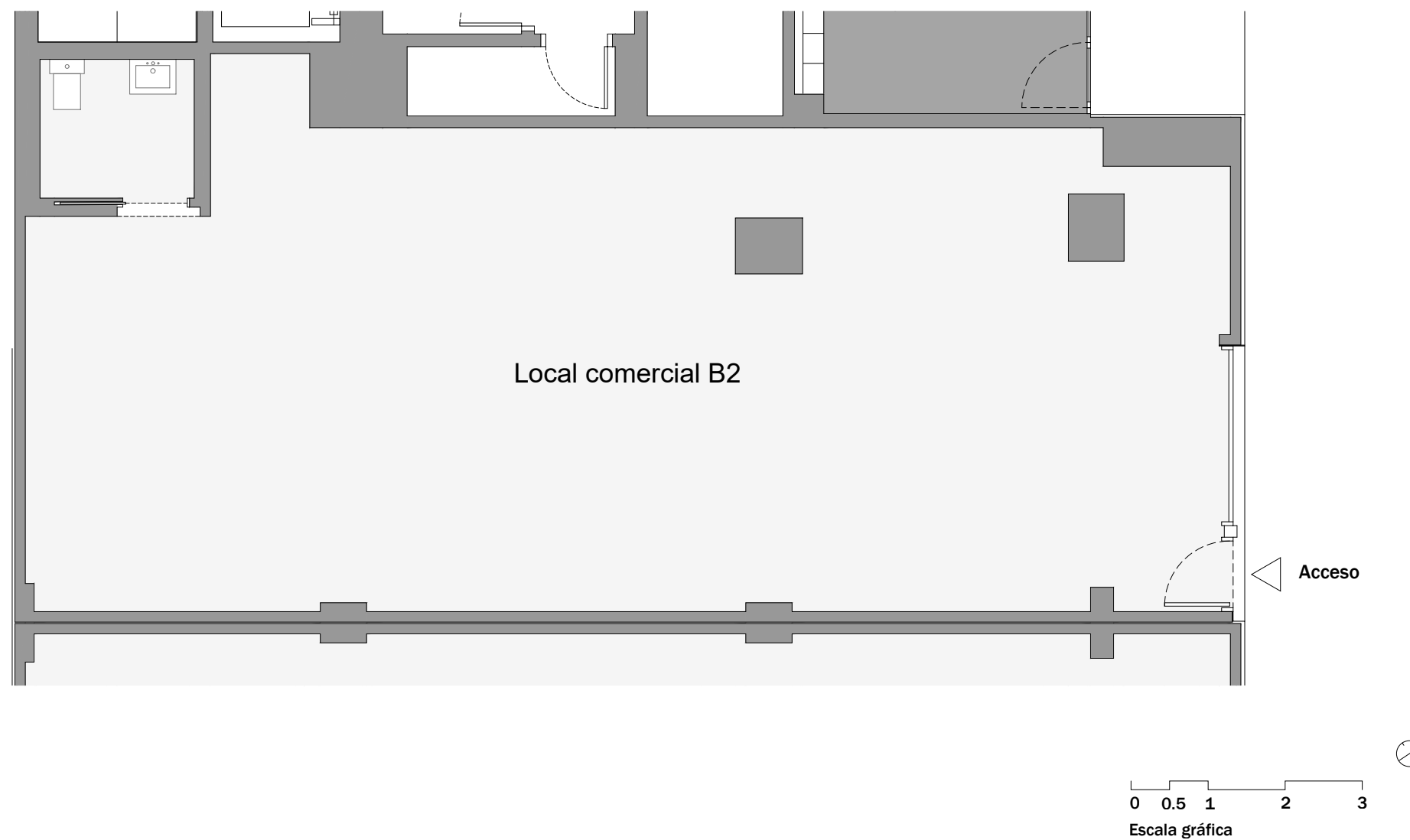


# TALASSA BADALONA - LOCAL COMERCIAL B2

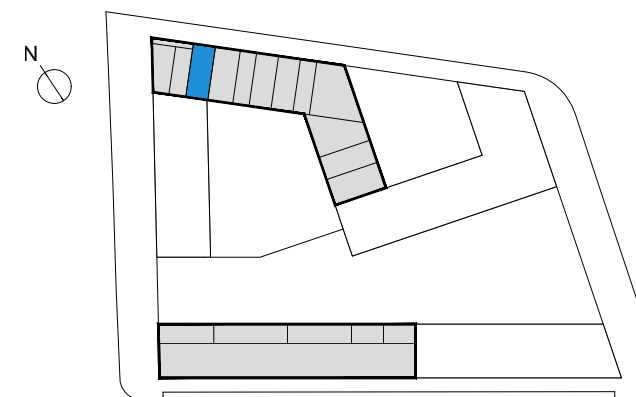
C/ DE LA MAR JÒNICA, C/ D'EDUARD MARISTANY, C/ DEL MARE NOSTRUM, BADALONA, BARCELONA

CULMIA



## Superficies

Útil interior aproximada	97.28 m2
Construida	106.70 m2



# Talassa Badalona