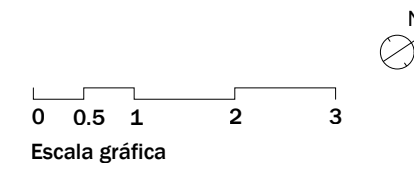
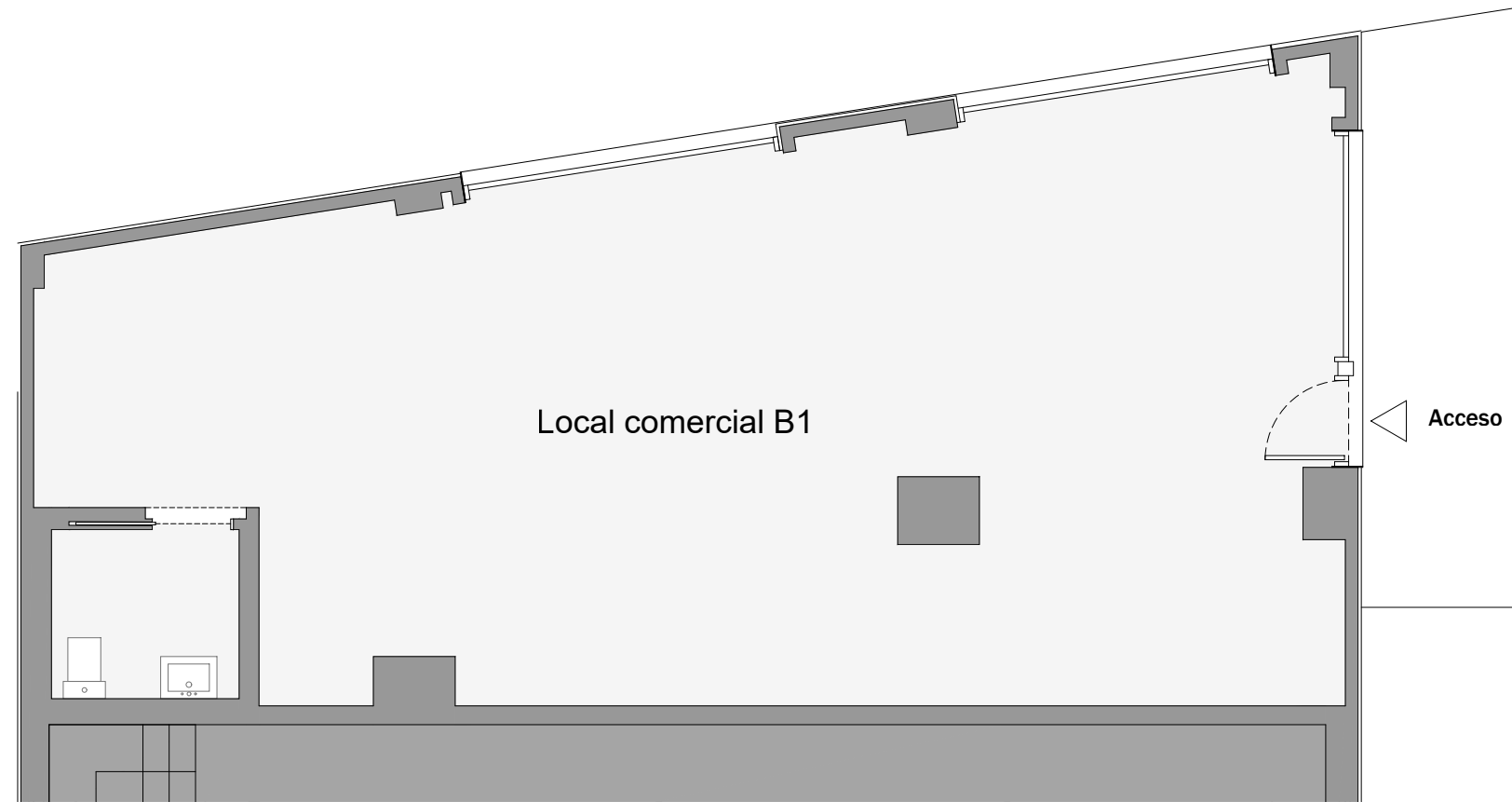


TALASSA BADALONA - LOCAL COMERCIAL B1

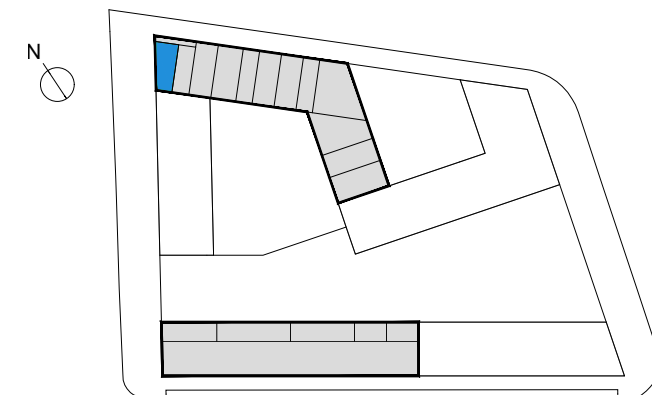
C/ DE LA MAR JÒNICA, C/ D'EDUARD MARISTANY, C/ DEL MARE NOSTRUM, BADALONA, BARCELONA

CULMIA



Superficies

Útil interior aproximada	78.65 m ²
Construida	88.03 m ²



Talassa
Badalona