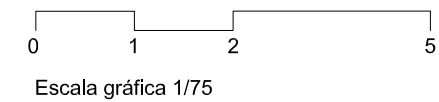
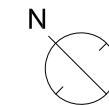
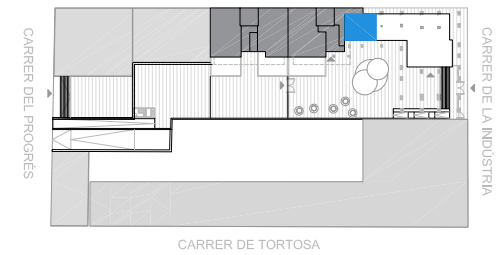
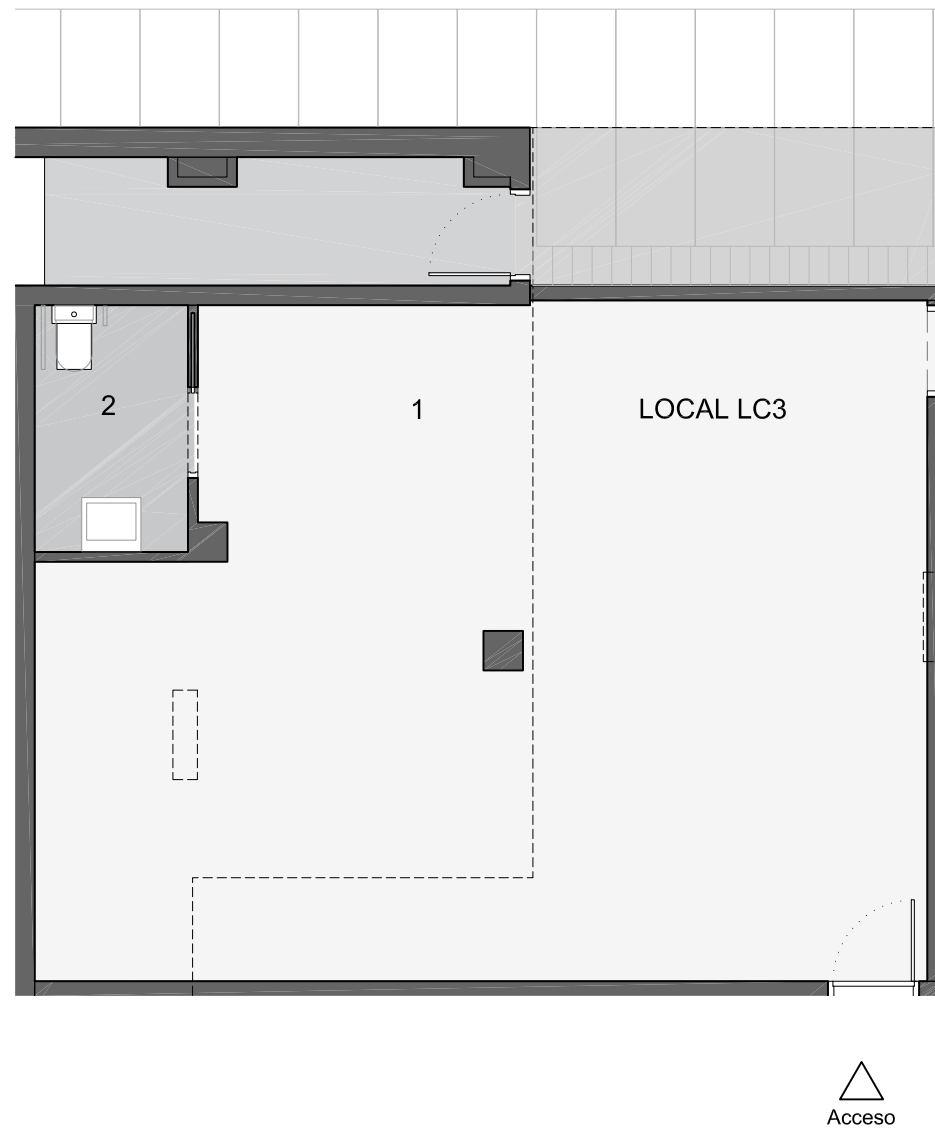


ARESTA - LOCAL COMERCIAL LC3
CALLE PROGRÉS - CALLE TORTOSA - CALLE INDÚSTRIA, BADALONA

CULMIA



Escalera/Portal
Planta/s
Local

B
 PB
 LC3

Superficies

Útil interior aproximada 60,50 m2

Construida Interior 65,60 m2

Superficies Útiles por estancia

1.General 57,50m2
 2.Baño 3,00m2

ARESTA