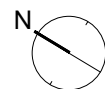
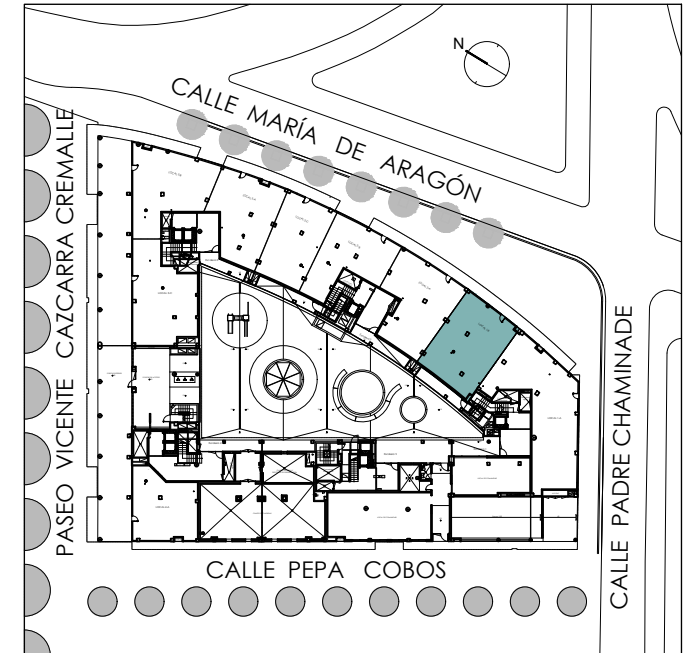
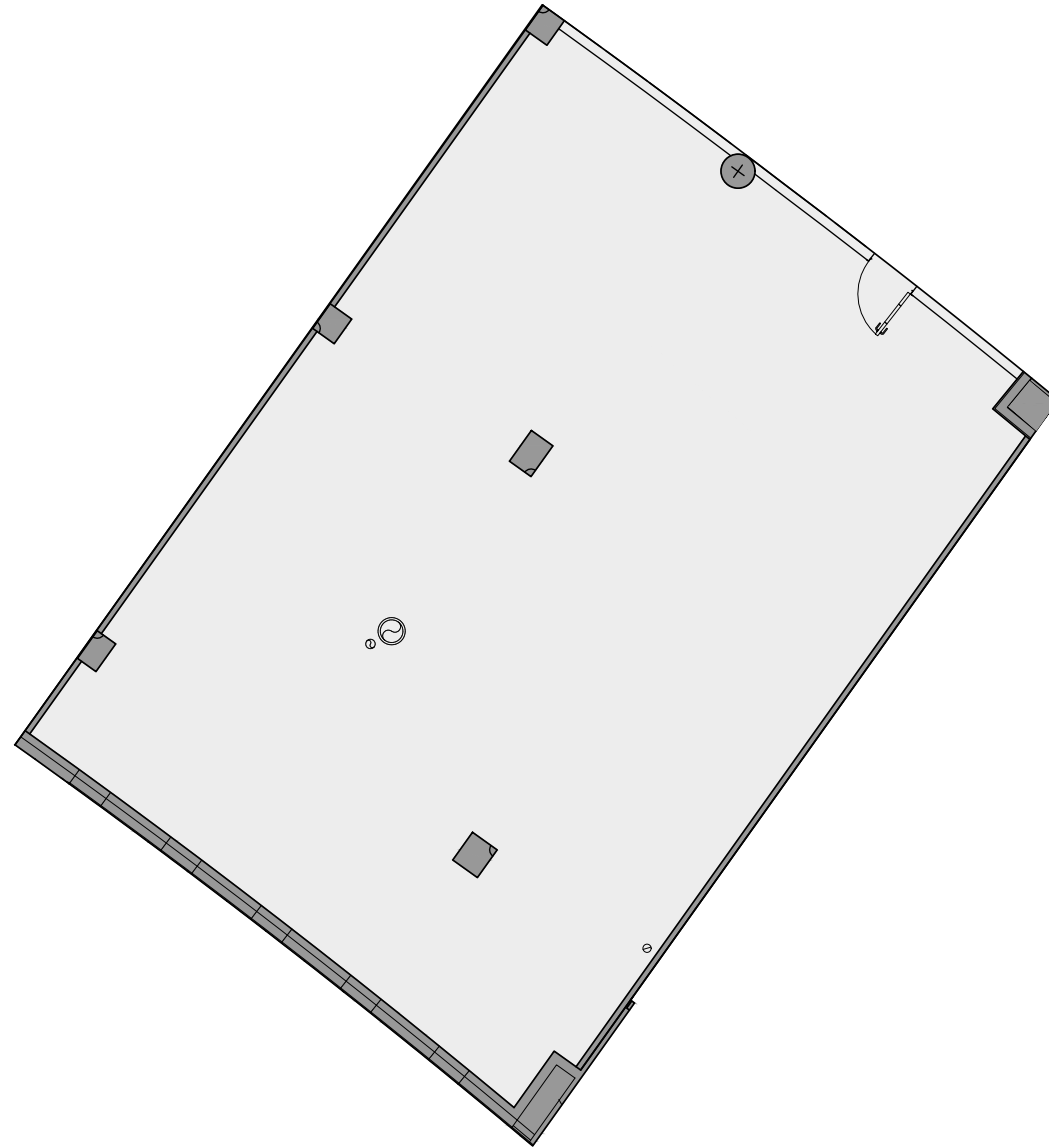


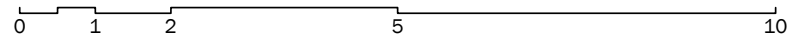
# RESIDENCIAL MARÍA DE ARAGÓN - PASEO VICENTE CAZCARRA N°6, ZARAGOZA

## LOCAL 1-B

**CULMIA**  
Destino, tu hogar



Escala gráfica



### Superficies

Útil interior aproximada	98.00 m <sup>2</sup>
Construida	103.48 m <sup>2</sup>

# Residencial María de Aragón