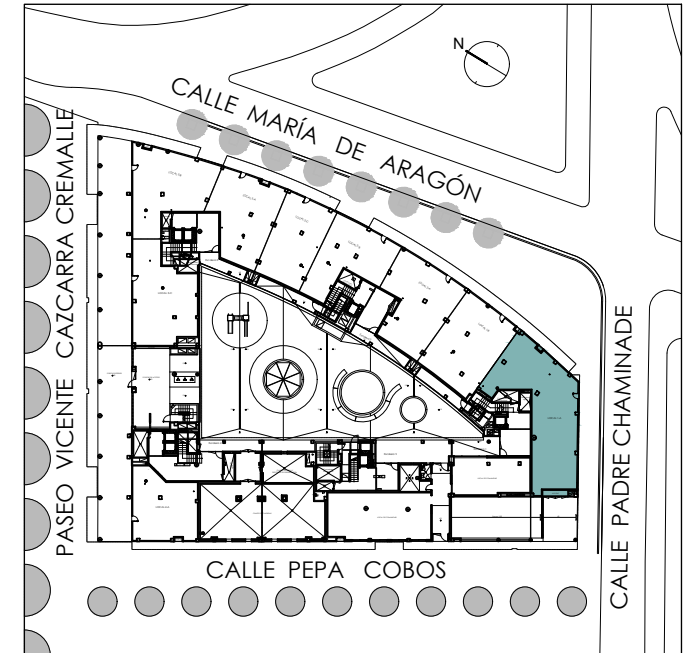
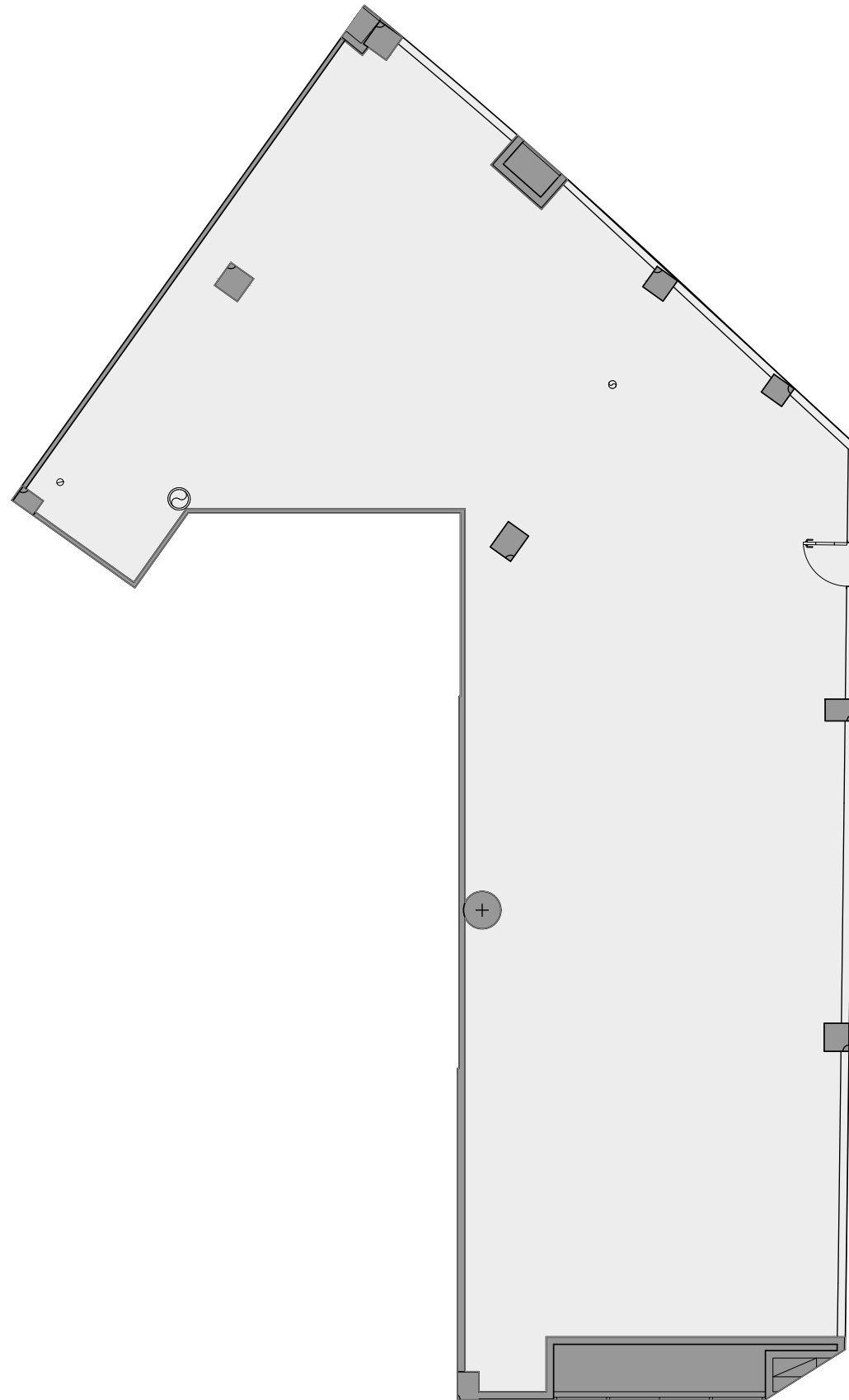


# RESIDENCIAL MARÍA DE ARAGÓN - PASEO VICENTE CAZCARRA nº6, ZARAGOZA

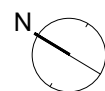
## LOCAL 1-A

**CULMIA**  
Destino, tu hogar

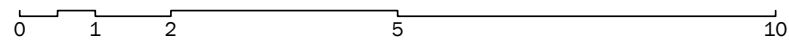


### Superficies

Útil interior aproximada	141.24 m <sup>2</sup>
Construida	151.00 m <sup>2</sup>



Escala gráfica



# Residencial María de Aragón